

Architectural Metal Roofing and Siding COLOR CHART

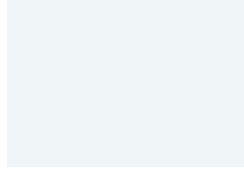


STANDARD COLORS

DURA TECH™ 5000 - Premium 70% Fluoropolymer (PVDF) Paint system



ZINCALUME® Plus*
SRI: 64 • LRV: 67



Cool REGAL WHITE
SRI: 88 • LRV: 75



Cool PARCHMENT
SRI: 58 • LRV: 40



Cool SIERRA TAN
SRI: 55 • LRV: 34



Cool PEBBLE
SRI: 48 • LRV: 27



Cool WALNUT
SRI: 38 • LRV: 18



Cool WEATHERED COPPER
SRI: 34 • LRV: 11



Cool DARK BRONZE
SRI: 32 • LRV: 8



Cool TERRA-COTTA
SRI: 41 • LRV: 15



Cool COLONIAL RED
SRI: 35 • LRV: 9



Cool OLD TOWN GRAY
SRI: 43 • LRV: 27



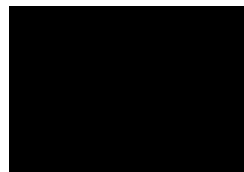
Cool ZINC GRAY
SRI: 39 • LRV: 20



Cool SLATE GRAY
SRI: 33 • LRV: 12



Cool MIDNIGHT BRONZE
SRI: 27 • LRV: 7



Cool MATTE BLACK
SRI: 29 • LRV: 5



Cool TAHOE BLUE
SRI: 33 • LRV: 14



Cool REGAL BLUE
SRI: 29 • LRV: 10



Cool SAGE GREEN
SRI: 41 • LRV: 21



Cool LEAF GREEN
SRI: 30 • LRV: 11



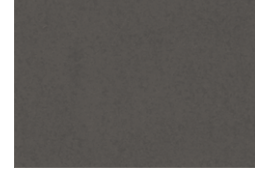
Cool FOREST GREEN
SRI: 29 • LRV: 9



PRE-PRIMER
(PRE-PRIMED 2 SIDES)

PREMIUM COLOR¹

(Subject to upcharge)



VINTAGE®¹
SRI: 22 • LRV: 20

METALLIC COLORS¹

DURA TECH™ mx
Premium Fluoropolymer (PVDF)
Pearlescent Paint system
(Subject to upcharge)



Cool METALLIC SILVER¹
SRI: 65 • LRV: 50



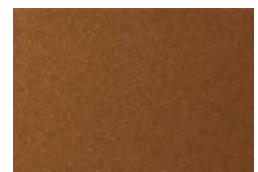
Cool SILVERSMITH¹
SRI: 58 • LRV: 54



Cool ZACTique® II¹
SRI: 39 • LRV: 22



Cool METALLIC CHAMPAGNE¹
SRI: 54 • LRV: 33



Cool METALLIC COPPER¹
SRI: 53 • LRV: 29

REPRESENTATION OF COLORS MAY VARY DUE TO PRINTING LIMITATIONS.

Sample color chips are available upon request. Consult your AEP Span representative for more information.

DURA TECH™ Fluoropolymer Coatings



TABLE NOTES:

- 24 and 22 GA
 - 24 GA only
 - 22 GA only
 - 26 GA only
- SRI: Solar Reflective Index.
LRV: Light Reflectance Value.

DURA TECH™ 5000 (PVDF)		SRI	LRV	Design Span®	Span-Lok™ hp	Select Seam®	Flex Series	Prestige Series®	Perception Collection®	Flush Panel	HR-36®	Box Rib™	Nu-Wave® Corrugated	PBR Panel	U-Panel	Mini-V-Beam™	Flat Sheet 46"	Flat Sheet 48 3/8"
Cool Regal White*	88	75	●	●	●	□	●	□	●	●	●	●	●	●	●	●	●	●
Cool Parchment	58	40	●	●	●	□	●	□	●	●	●	●	●	●	●	●	●	●
Cool Sierra Tan	55	34	●	●	●	□	●	□	●	●	●	●	○	○	○	●	●	●
Cool Pebble	48	27	●	●	●	□	●	□	●	○	○	○					○	●
Cool Walnut	38	18	●	●	●	□	●	□	●	○	○	○					○	●
Cool Weathered Copper	34	11	●	●	●	□	●	□	●	●	●	●	○	○	○	●	●	●
Cool Dark Bronze	32	8	●	●	●	□	●	□	●	●	●	●	●	●	●	●	●	●
Cool Terra-Cotta	41	15	●	●	●	□	●	□	●	○	○	○	○	○	○	○	○	●
Cool Colonial Red	35	9	●	●	●	□	●	□	●	○	○	○	○	○	○	○	○	●
Cool Old Town Gray	43	27	●	●	●	□	●	□	●	●	●	●	●	●	●	●	●	●
Cool Zinc Gray	39	20	●	●	●	□	●	□	●	●	●	●	○	○	○	○	○	●
Cool Slate Gray	33	12	●	●	●	□	●	□	●	●	●	●	●	●	●	●	●	●
Cool Midnight Bronze	27	7	●	●	●	□	●	□	●	●	●	●					●	●
Cool Matte Black*	29	5	●	●	●	□	●	□	●	●	●	●	○	○	○	○	○	●
Cool Tahoe Blue	33	14	●	●	●	□	●	□	●	●	●	●	○	○	○	○	○	●
Cool Regal Blue	29	10	●	●	●	□	●	□	●	●	●	●	○	○	○	○	○	●
Cool Sage Green	41	21	●	●	●	□	●	□	●	●	●	●					●	●
Cool Leaf Green	30	11	●	●	●	□	●	□	●	●	●	●	○	○	○	○	○	●
Cool Forest Green	29	9	●	●	●	□	●	□	●	●	●	●	○	○	○	○	○	●
DURA TECH™ mx (PVDF) ¹																		
Cool Metallic Silver	65	50	●	●	●	□	●	□	●	●	●	●	○	○	○	○	○	●
Cool Silversmith	58	54	●	●	●	□	●	□	●	○	○	○					○	●
Cool ZACTique® II	39	22	●	●	●	□	●	□	●	●	●	●	○	○	○	○	○	●
Cool Metallic Champagne	54	33	●	●	●	□	●	□	●	●	●	●	○	○	○	○	○	●
Cool Metallic Copper	53	29	●	●	●	□	●	□	●	○	○	○					○	●
PREMIUM COLOR 1																		
Vintage®	22	20	○	○	○	○	○	○	○	○	○	○	○	○	○	○	○	○
BARE (Clear Acrylic Coated)																		
ZINCALUME® Plus	64	67	●	●	●	●	●	●	●	●	●	●	●	●	●	●	●	●
PRE-PRIMER																		
Pre-Primed Two Sides	N/A	N/A																○

PAINT SYSTEM	SMP	PVDF
OVERALL	Better	Best
PRICE POINT	Moderate	Higher
WARRANTY	Long	Longest
DURABILITY	Improved Weatherability	Highest Weatherability
APPLICATION	Residential & Commercial	High-end, Architectural/Commercial
OTHER ATTRIBUTES	Wide range of colors & gloss options	Excellent chalk & fade resistance

DURA TECH™ 5000: A premium 70% Fluoropolymer (PVDF) paint system.

DURA TECH™ mx: A premium Fluoropolymer (PVDF) Pearlescent paint system.

VINTAGE® COATED METAL: TruZinc® G90 substrate with a FEVE paint system and graffiti-resistant qualities.

*** AVAILABLE IN ALUMINUM .040" ONLY:** Stocked in Matte Black and Regal White, and is available in 48" x 10' flat sheet.

Material is painted on both sides. One side is Matte Black and the other is Regal White.

1 BATCH SENSITIVITY: Prints and metallic paint systems are batch sensitive (may have color variation) and are directional in nature. Different batches are not to be mixed on projects. AEP Span recommends requesting a sample before ordering to ensure color accuracy. AEP Span is not responsible for color variations.

OIL CANNING: All flat metal surfaces can display waviness commonly referred to as "oil canning". "Oil canning" is an inherent characteristic of steel products, not a defect, and therefore is not a cause for panel rejection.

SRI values in accordance with ASTM E1980 and are based on independent testing. Cool Roof Rating Council (CRRC) performance values for CA Title 24 are based on color families and will differ from those listed in table.

REPRESENTATION OF COLORS MAY VARY DUE TO PRINTING LIMITATIONS

Sample color chips are available upon request. Consult your AEP Span representative for more information.

SPECIALTY PRINTS, ALUMINUM, CUSTOM COLORS, AND OTHER GAUGES AVAILABLE AS SPECIAL ORDERS

Inquire with your outside sales representative about lead times and minimum order requirements.

FINISHES DEVELOPED BY



ZINCALUME® Plus

